



FIRENZE IN 15 STEPS

- 1 PALAZZO LEVI
- 2 PALAZZO RICASOLI
- 3 STAZIONE FERROVIARIA
- 4 SANTA MARIA NOVELLA
- 5 SAN LORENZO
- 6 PALAZZO VECCHIO
- 7 GALLERIA DELL'ACCADEMIA
- 8 SANTA MARIA DEL FIORE
- 9 MUSEO DELL'OPERA DI SANTA MARIA DEL FIORE
- 10 PIAZZA DELLA SIGNORIA
- 11 LOGGIA DEI LANZI
- 12 SANTA CROCE
- 13 GALLERIA DEGLI UFFIZI
- 14 PONTE VECCHIO
- 15 L'OLTRARNO



PALAZZO LEVI, piazza della Repubblica 6
PALAZZO RICASOLI, via Ricasoli 48
Firenze

www.domuxhome.it

booking@domuxhome.it
+39 02 6982 6996

info@domuxhome.it
+39 055 267 0051

AD CHOICE



*Dream
sojourns*

THE NEW PROTAGONISTS
*of haute hospitalité
in Florence: Palazzo Levi
and Palazzo Ricasoli*



FEELING AT HOME

*Travelers visiting Florence can now indulge in the unique experience of a stopover of luxury and charm in the exclusive setting of a historic palace in the city center. A new hospitality concept created by Domux Home. Starting with the apartments of **PALAZZO LEVI**. Refined style and total comfort.*

project by **PIERATELLI ARCHITETTURE** – *text by* **FRANCA ROTTOLA**

ABOVE: Florence, panoramic view of the very central Piazza della Repubblica. At the center, Palazzo Levi, designed by Giuseppe Boccini and built in 1890-93. RIGHT: the exclusive **Palazzo Vecchio Apartment**: a glass diaphragm screened by curtains of fine fabric separates the living room and study from the bedroom zone. PREVIOUS PAGE: the cathedral, with the dome of Brunelleschi and the steeple of Giotto, seen from the terrace of one of the four penthouses of Palazzo Levi.

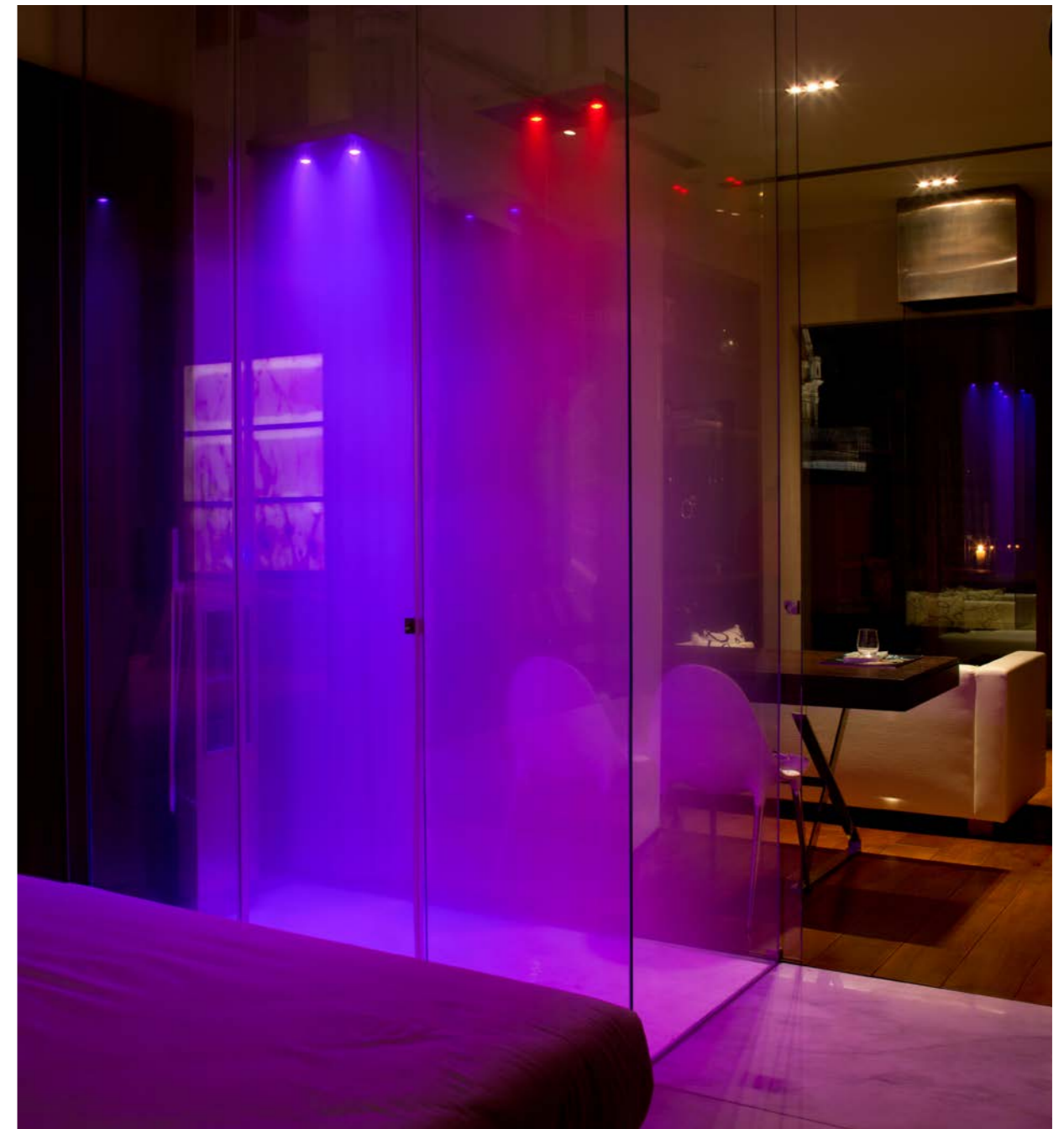




The **Duomo Apartment** in Palazzo Levi. The lit fireplace in a glass case guides the gaze towards the spectacular evening view of the illuminated dome and steeple of the cathedral of Santa Maria del Fiore. LEFT: paneling, shelves and floors in wood, with indirect lighting, creating a particularly warm, welcoming atmosphere.

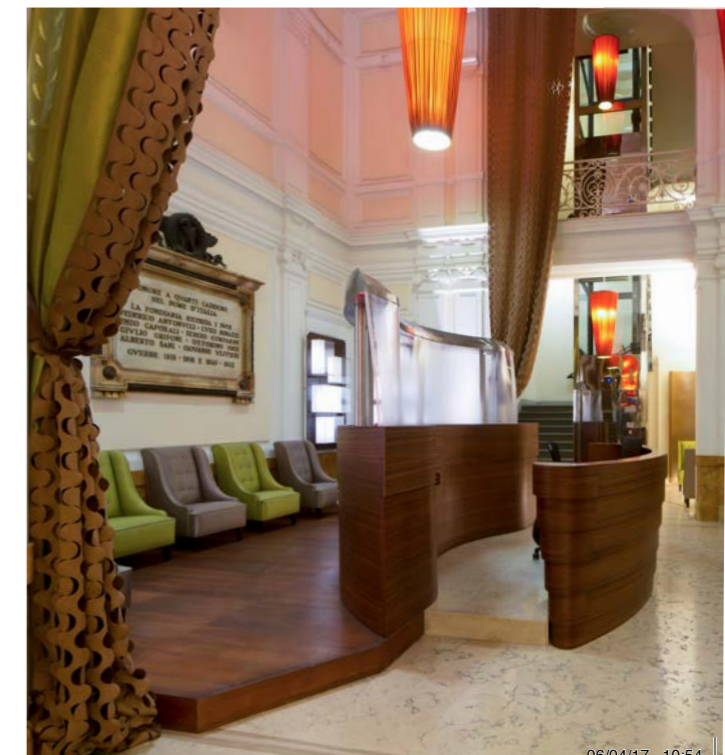
Palazzo Levi is a reference point for those who visit Florence. It stands on one side of the very central Piazza della Repubblica, a monumental legacy of the days when the city was the capital of the Kingdom of Italy. Life always bustles, here, but without a sense of chaos. Santa Maria del Fiore, with its steeple by Giotto and the supreme dome of Brunelleschi, is very close by. Inside the palace designed in the late 1800s by Giuseppe Boccini, with rigorous forms, Domux Home has collaborated with Pierattelli Architetture to create four luxury penthouses that can be rented for short stays. With open layouts and a priceless view of the rooftops of Florence, they are furnished with impeccable taste, with an

orientation of erudite, never excessive Modernism. They offer all the most advanced comforts and services, with custom furnishings made by outstanding Florentine artisans, and the finest fabrics and finishes: that extra touch that makes all the difference is provided by the fireplaces encased in glass or framed by elegant moldings. The bathrooms have showers outfitted for color therapy, as well as minipools for a complete sense of wellbeing. The panoramic private terraces suggest the bohémienne Florence of the past, ambassadors of a new hospitality concept. The pleasure of living and living well, echoed on ground level by the historic Gilli and Paszkowski cafes, historic sites of culture, complicity and conflict (including the memorable brawls between the Florentine artists and the Futurists arriving from Milan). >>



*«Florence? The more you live there,
the more you realize you **LOVE IT**.
There is something hospitable about the
city that makes me feel at home».*
Pyotr Ilyich Tchaikovsky

LEFT: Palazzo Levi, the living area of the **Strozzi Apartment**. Cream-color sofa and cushions covered with striped cream/black Dedar fabric. Behind it, the glass box of the relaxation zone with color therapy showers. ABOVE: double glass shower with color therapy, nebulized water and Irish mist. For a moment of total wellbeing. RIGHT: the reception area conserves the elegant original architecture of the building.





ABOVE: pale tones for the seating in the living area of the **Medicea Apartment** in Palazzo Levi. Zebrawood floors and low bookcase in wenge. All custom made. BELOW: steel and wenge are the materials of the kitchen, built into a niche. The custom daybed in the living area of the Medicea Apartment. RIGHT: a minipool lights up with colors, separating the living area from the bedroom zone. The space has been organized by the designers in an extremely rational way, for the highest possible level of comfort.



VACATIONS WITH CHARM

*The seven apartments
of **PALAZZO RICASOLI**: in the
heart of historic Florence,
the right address for
an unforgettable stay.*



ABOVE: the facade of the historic building on Via Ricasoli that contains the apartments outfitted by Domux Home. RIGHT: the living area of the luxurious **Accademia Apartment** in Palazzo Ricasoli features a loft with an airy cantilevered glass staircase. The decor blends different styles with impeccable taste: the white surfaces form a contrast with armchairs covered in soft red or dove gray velvet, red and gold drapes, and floors in black wenge. The fireplace dictates the symmetry of the space.



BELOW: the space of the three-room **Annunziata Apartment** of Palazzo Ricasoli features sliding doors that vanish into the walls. The comfortable daytime area is composed of a living room, a dining room and a kitchen. The lighting is based on warm tones to create an intimate, relaxing atmosphere. An environment with a spirit of freedom and restfulness. RIGHT: after a day of “busy” tourism, a champagne toast followed by a regenerating bath.



A CHANGE OF SCENE, BUT NOT OF ATMOSPHERE, or of the sense of being at home, in the abode of your wildest dreams. Two words are inscribed on the architectural frame around this second destination of Florentine hospitality 2.0: Palazzo Ricasoli. We're on the street of the same name, at number 48, in the urban layout traced by Arnolfo di Cambio at the end of the 1200s, close to the Galleria dell'Accademia that contains Michelangelo's David. The neighborhood is packed with crafts workshops and tempting culinary delicacies. The Palazzo displays the exuberant sobriety of the early Florentine 17th centu-

ry, conserving the elegant facades of Renaissance origin over the windows. Inside, Domux Home and Pierattelli Architetture have organized seven apartments on four levels. Three are two-room units, three offer three spaces each, and the last one – named Uffizi – is a four-room flat. Again in this facility the key words are luxury and charm. Without overlooking the truly impeccable comfort. Everything conforms to these criteria: each of the seven apartments is different from the others in terms of colors, materials and furnishings, though there are certain architectural constants like the fireplaces that add a >>

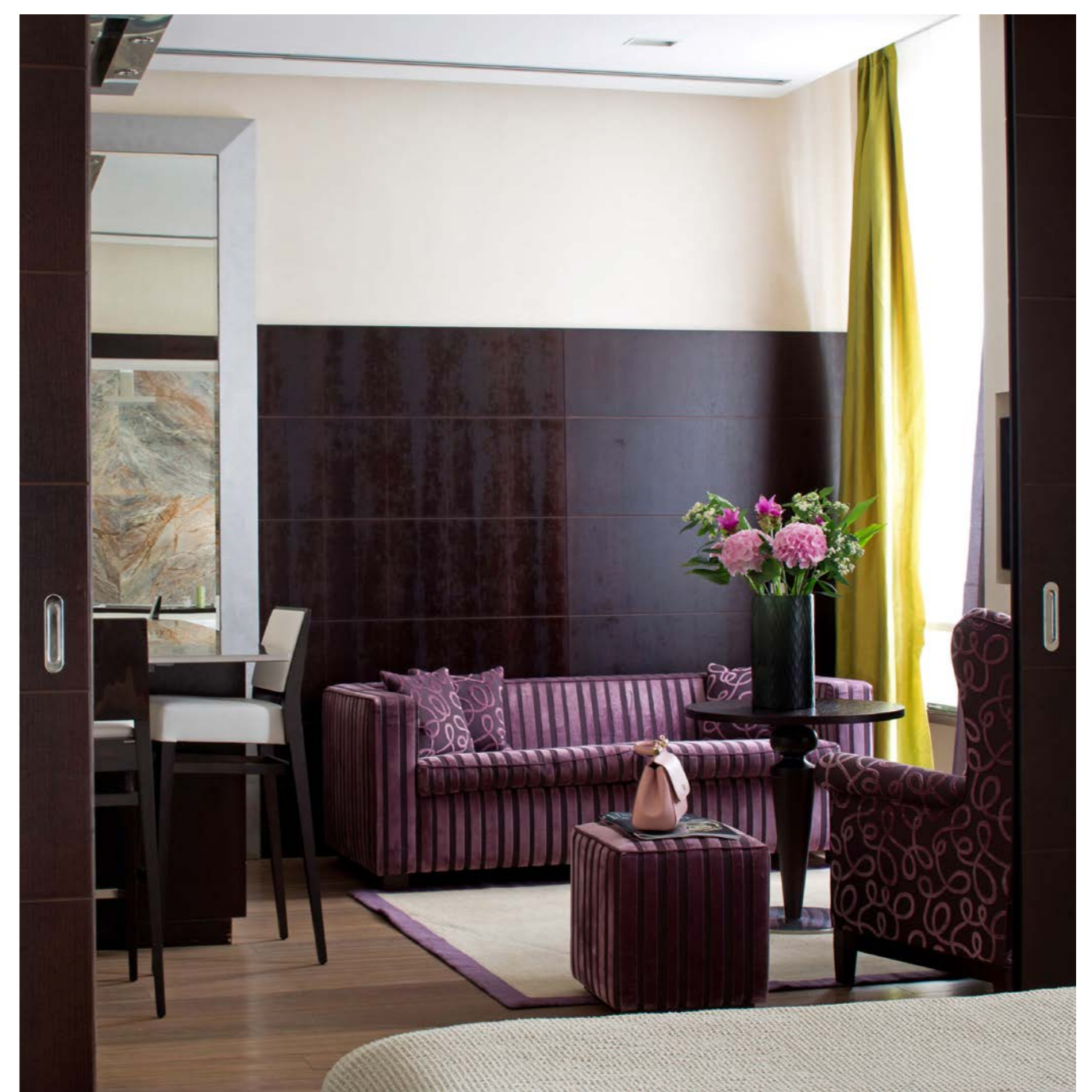
*«The sense of surprise, in Florence, **IS RENEWED** with every trip there».*

Ennio Flaiano



The large, elegant living area of the **Opera Apartment** of Palazzo Ricasoli, with comfortable armchairs and custom bookcases, with flooring in various types of wood. The dining table and fireplace complete the daytime area, separated from the study by a vanishing sliding door. The furnishings, as in all the apartments of the Palazzo, have been made by outstanding local craftsmen.





«Florence,
POWERFUL LILY,
spring shoot»
Dino Campana

LEFT: view of the semicircular kitchen of the four-room **Uffizi Apartment** in the historic Palazzo Ricasoli. ABOVE: the living area of the **Pitti Apartment** features comfortable seating covered in refined violet and pink striped velvet. RIGHT: detail of the bedroom with walls paneled in wenge, zebra wood flooring and a spacious open wardrobe.





LEFT: the bergères and bookcases in white create an effective chromatic contrast in the reception area of **Palazzo Ricasoli**. ABOVE: in the living area of the **Uffizi Apartment** of Palazzo Ricasoli, the space between the kitchen and the dining room can be joined with or separated from the parlor thanks to a hide-away sliding door. BELOW: another view of the living area of the four-room **Uffizi Apartment**, with the study in the foreground.

gesture of warmth to the interior mood. To exploit the space down to the centimeter, the furnishings have been custom designed and made by skilled local artisans. Zebra wood and teak are the materials selected for the floors, while the wall panels are in painted wood and wenge. The setting, like that of Palazzo Levi, is completed by fine drapes and fabrics, on seats and cushions, high-performance equipped kitchens and bathrooms designed as domestic spas with hydromassage minipools. Charming spaces in fascinating locations, welcoming, "familiar" environments gauged to meet the needs of individual or large families. A true "home" where it is nice to return for relaxing moments, surrounded by the magical spell of the city of the Medici and the House of Habsburg-Lorraine, after a day of tourism or concentration on business. Even Mark Twain, who spent time in Florence in 1903 and 1904, managed to express it in spite of his outlandish Italian: «Firenze? È casa mia!». **THE END**

